

BIREN

Building Integrated Renewable Energies



 biren@biren.es

 653 10 52 81

Consumption habits report

Content

- **Who are we?**
- **What does the habit report consumption?**
- **How to request my report?**
- **Any doubt?**

Who are we?

BIREN is a company of Ingeniery and arquitectory services of reference in the renewable energy sector. We are specialized in its integration in urban environments throughof new products (BIPV & OPV), new designs, and a digitization of the sector through the energy management of our customers.

Inside of our energy consulting services, we offer consulting services strategic, development of new products and analysis of Data of market and of consumption. For it **BIREN** this in Contact with a high number of companies of the sector, centers of investigation or associations what allow you to stay updated at all times, in addition to having a extensive experience in sector.



What contains the report of habits of consumption?

- Savings power hired

We help you detect which is the optimal power to hire in your home for no overpay and generate savings per month month From the beginning.

- Savings electrical consumption

We do an exhaustive analysis of your consumption and we advise you on the electricity tariff what it suits you better according your needs, proposing the company electrical of between all the of the market with the what you will get a higher saving.

- Incorporation of installation photovoltaic

We offer a service of self-consumption photovoltaic of generation of clean and renewable energy, which would suppose a saving of up to 70% on your bill from the light.

**Whether decide to incorporate a photovoltaic installation in your home, don't worry by nothing, we will carry out the project and contact him installer more economical and quality of the zone*

- Recommendations of consumption

We advise you with a series of general recommendations included in the report according to the type of housing and your consumption with the what save even more in you bill of light.

How apply for me report?

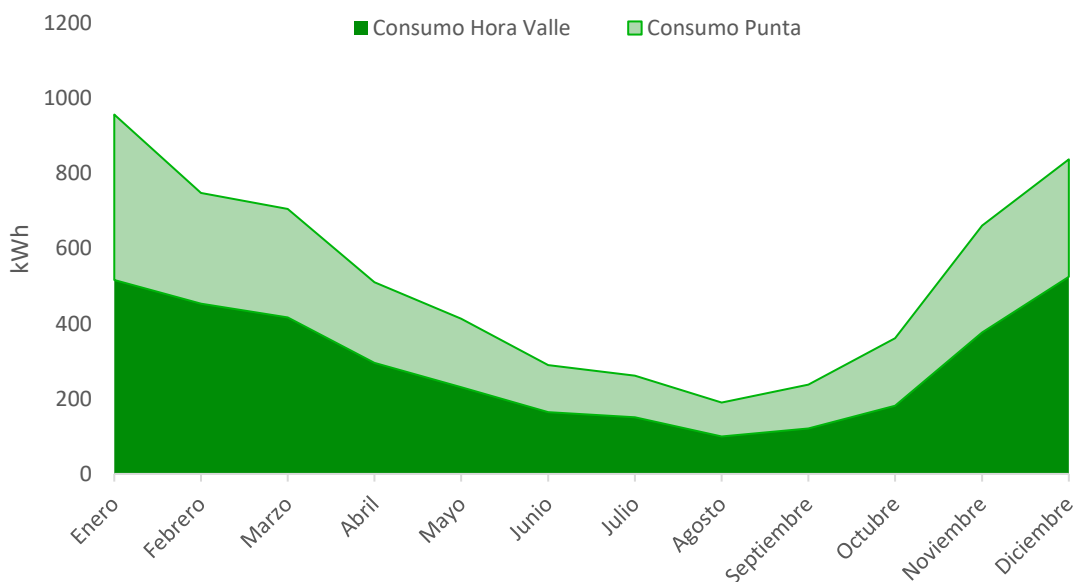
Alone make we need proportions you curve of load. Then tea we explain how get it.

- What is it a curve of load?

It is the distribution of the consumption of a supply during a period established, measured hourly time and with the possibility of to be represented graphically.

As holders of an electricity supply we have the right of know the curves of load of our counter, yes, this has what be remotely managed and operational. As well necessary what readings be real and no Estimated. AND the information what I know us facilitates It is bills already issued.

In general, all the distributors is it so forced to provide us with this information

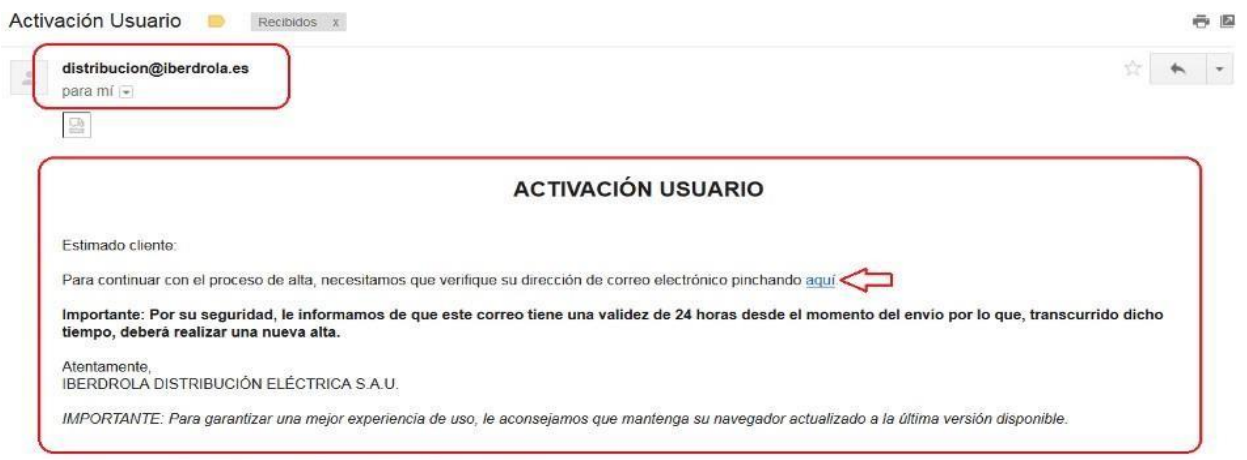


- How access to this service?

You have what get in in the page of the Distributor what have assigned by zone and look for "zone private " or area of client and check in.

- Steps to follow:

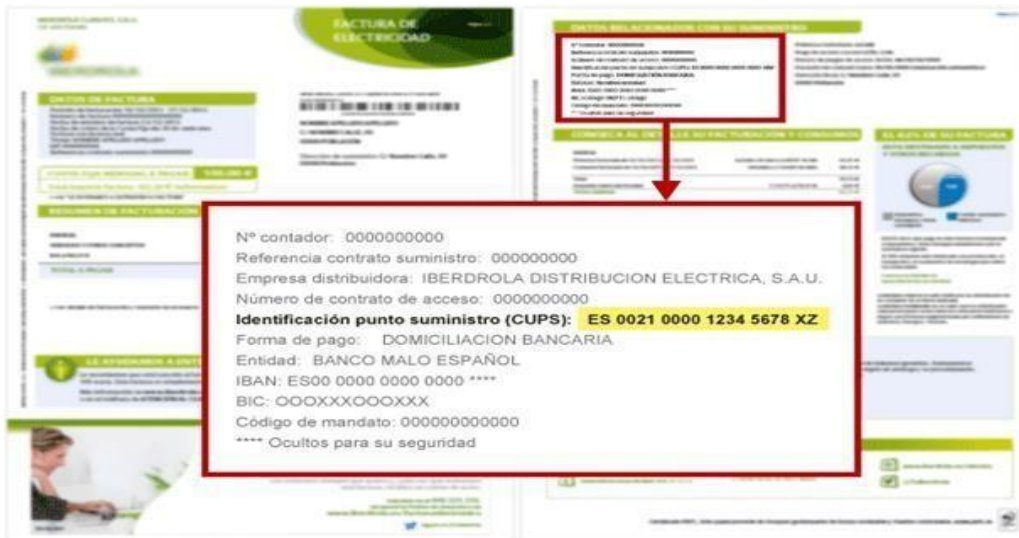
- We register with our data (personal data of the holder of the supply) on the our distributor.
- We await confirmation email and confirm by he link received



- Now we will enter with our User and start session.



- Once logged in with our access data, we enter the number CUPS (is the alphanumeric code of twenty or 22 digits what identifies each house or deal of our supply remote managed)



- The first thing we will see at get in on the distributor's page is the List of contracts what us It will show everyone the supply points of the what let's be headlines. We must select the supplyon he whatwe want to consult the consumption.

Lista de contratos i

Dirección de suministro	CUPS	Tipo	Autoconsumo	Estado
Dirección de suministro 1	ES0021	A	-	Alta
Dirección de suministro 2	ES0021	A	-	Alta

- Once the supply is selected what we are interested in, we must click on the text REMOTE MANAGEMENT and select "Consumption billed schedule". This option alone will be available if our counter is TV managed.



- On the Hourly Consumption screen invoiced we can select our consumption by periods of billing or between two dates selected manually. It will show a curve with all our energy data hourly consumed for the period selected.
- And finally for download the .CSV file with our consumption data we will have what click on the icon download located in the top right of graphic.



From that moment on we can see our load curve with our consumption schedule.

If you have any questions, contact U.S.

Any doubt?

If you have any questions we will be delighted of assist you, we are at your disposal for any aspect that you need.



biren@biren.es



653 10 52 81